



UROC28 Polyclonal Antibody

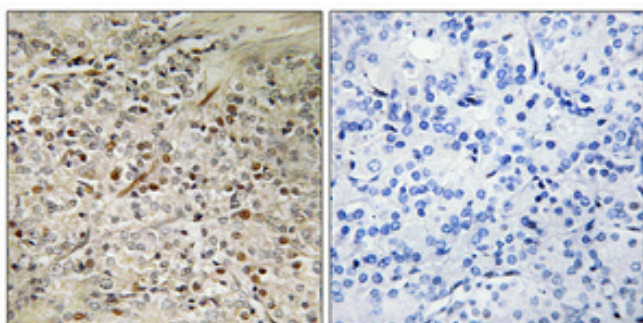
Catalog No	YP-Ab-00547
Isotype	IgG
Reactivity	Human;Rat;Mouse;
Applications	WB;IHC;IF;ELISA
Gene Name	PBOV1
Protein Name	Prostate and breast cancer overexpressed gene 1 protein
Immunogen	The antiserum was produced against synthesized peptide derived from human PBOV1. AA range:31-80
Specificity	UROC28 Polyclonal Antibody detects endogenous levels of UROC28 protein.
Formulation	Liquid in PBS containing 50% glycerol, 0.5% BSA and 0.02% sodium azide.
Source	Polyclonal, Rabbit,IgG
Purification	The antibody was affinity-purified from rabbit antiserum by affinity-chromatography using epitope-specific immunogen.
Dilution	Western Blot: 1/500 - 1/2000. Immunohistochemistry: 1/100 - 1/300. Immunofluorescence: 1/200 - 1/1000. ELISA: 1/40000. Not yet tested in other applications.
Concentration	1 mg/ml
Purity	≥90%
Storage Stability	-20°C/1 year
Synonyms	PBOV1; UROC28; Prostate and breast cancer overexpressed gene 1 protein; Protein UROC28; UC28
Observed Band	19kD
Cell Pathway	Cytoplasm . Nucleus .
Tissue Specificity	Expressed in colon, prostate, small intestine, testis and spleen, with lower expression in thymus, ovary, and peripheral blood leukocytes. Up-regulated expression in prostate, breast, and bladder cancer, but not in lung and colon cancer.
Function	tissue specificity:Expressed in colon, prostate, small intestine, testis and spleen, with lower expression in thymus, ovary, and peripheral blood leukocytes. Up-regulated expression in prostate, breast, and bladder cancer, but not in lung and colon cancer.,
Background	This intronless gene encodes a protein of unknown function. Its expression is up-regulated in some types of cancer, including prostate, breast, and bladder cancer. [provided by RefSeq, Aug 2011],
matters needing attention	Avoid repeated freezing and thawing!



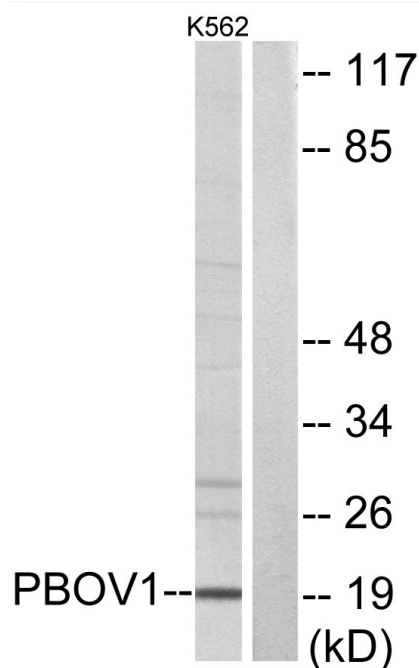
Usage suggestions

This product can be used in immunological reaction related experiments. For more information, please consult technical personnel.

Products Images



Immunohistochemical analysis of paraffin-embedded Human prostate cancer. Antibody was diluted at 1:100(4° overnight). High-pressure and temperature Tris-EDTA,pH8.0 was used for antigen retrieval. Negative contrl (right) obtained from antibody was pre-absorbed by immunogen peptide.



Western blot analysis of lysates from K562 cells, using PBOV1 Antibody. The lane on the right is blocked with the synthesized peptide.